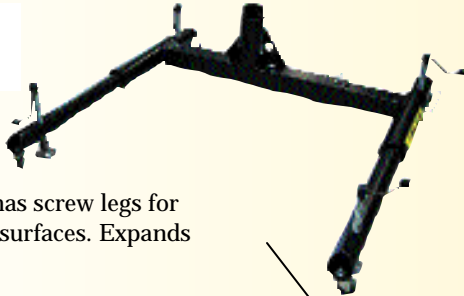


CONFINED SPACE SAFETY SOLUTIONS: DAVIT SYSTEMS

This simple, yet versatile Davit arm can be placed in any of the portable or permanent sleeves shown.

PORTABLE SLEEVES

The Expandable Base has screw legs for adjustment on uneven surfaces. Expands from 36" to 56".
PNUH503X-18



The Vehicle Hitch Mounts connects to 2" sq. vehicle receivers.
PNUS104



The Manhole Sleeve simply drops into manway. Specify size from 17.5" OD to 35.5" OD.
PNUMS200-R



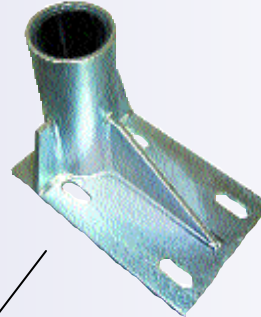
The Adjustable Wall Mount clamps using four screw clamps straddles retention walls, clarifier walls, parapets, tanks, etc.
PNUS103-ADJ



See Reverse for Winch Options

PERMANENT SLEEVES

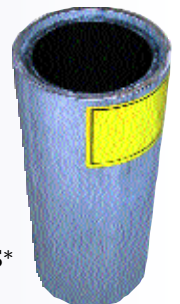
The Floor Mount is anchored by bolts, or it welds to floors, truck beds, catwalks, etc.
#PNUS100
#PNUS100-SS*



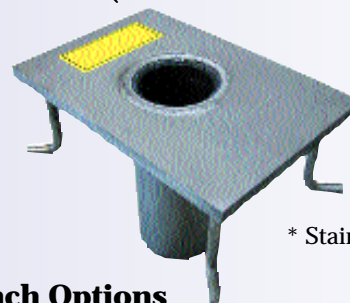
The wall mount is anchored by bolts or welds to truck bumpers, tank walls, sides of catwalks, meter pits, etc.
PNUS101 or PNUS101-SS*



The Cylinder Core mount is drilled into existing concrete or poured into fresh concrete.
PNUS105-CS or PNUS105-CS-SS*

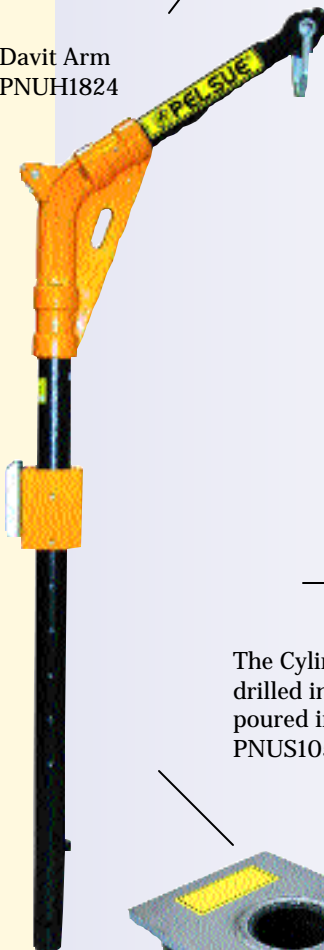


Flush Floor Mount, placed in fresh concrete, is great for high traffic areas where trip hazards are a concern.
PNUS102A
PNUS102A-SS*



* Stainless Steel version

Davit Arm
PNUH1824



PK Safety Supply

Where Safety Means a Great Deal

2005 Clement Avenue, Alameda, CA 94501

800-829-9580 • 510-337-8880 • www.pksafety.com



CONFINED SPACE SAFETY SOLUTIONS: MAN RATED WINCHES AND LIFELINES

Man Rated Winches

These winches attach to the Davit arm shown on the reverse and are man rated to 350 lbs.

Features include:

- 10:1 safety factor
- 5.5:1 gear ratio single speed drive
- Retrieval rate of 23' per minute
- Continuous braking drive prevents free wheeling
- Double pawls on friction brake provide back up safety
- Low wear, high temperature brake pads eliminate brake maintenance for life of the winch
- Anti-friction drive bearings assure trouble free life in continuous use
- Three permanent wraps of cable on the drum to assure low cable attachment loads
- Level wind springs prevent loosening of cable lays
- Slip clutch drive prevents back winding of cable drum
- Galvanic zinc coating of all metal parts reduces corrosion in harsh environments
- Double action locking swivel snap hook is provided that can be used with remote connect/disconnect equipment
- Mounting means provided for quick attachment
- Available with stainless steel cable or synthetic rope

PLPS806MR-70



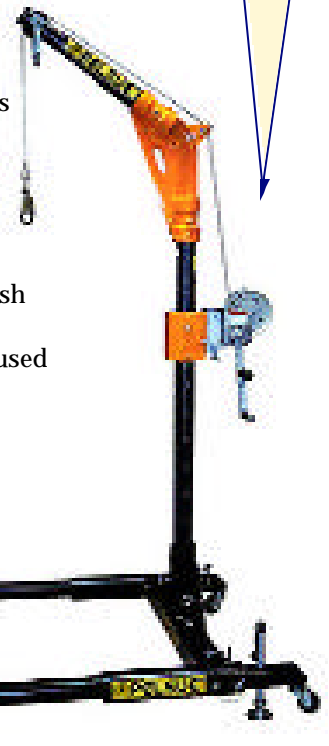
PLPS806MR-70

PLPS906MR-70

Winch c/w 70' Stainless steel Cable

Winch c/w 70' Synthetic Cable

The winches shown conveniently attach to the Davit arm



AD550AG



#AD550AG

Combination Winch-Self Retracting Lifeline

Features Include:

- Sealed motor spring and brake components
- 50' working length
- Attaches to tripod with 2 locking safety pins
- 3/16" galvanized cable (stainless available)
- One-man setup
- Cast aluminum housing
- Double locking snaphook with impact indicator
- Overload device incorporated into winch
- Maintains fall protection capabilities while utilizing emergency winch
- Meets OSHA 1926 and ANSI Z359.1-1998 standards for confined space entry

50' Winch-Self retracting Lifeline Combination

PK Safety Supply

Where Safety Means a Great Deal

2005 Clement Avenue, Alameda, CA 94501

800-829-9580 • 510-337-8880 • www.pksafety.com

